

# Waitākere Ranges Local Board newsletter

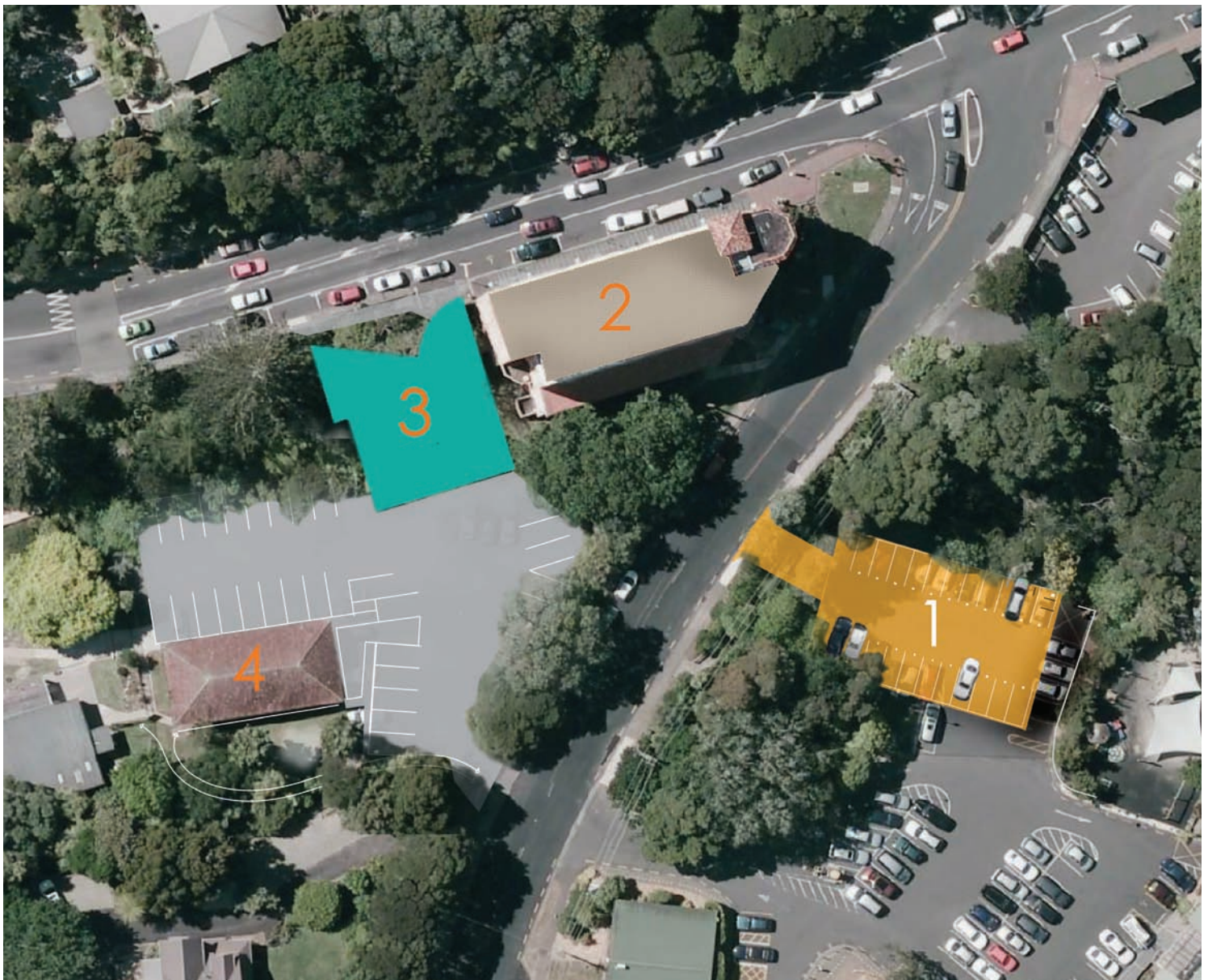
July 2012



## Lopdell House

The first stage of the Lopdell House redevelopment has started with the construction of a new parking deck above an existing car park off South Titirangi Road next to the play centre. The work will provide 23 additional parking spaces for the use of the wider Titirangi community. As part of notified consent conditions

for the work, the car park will be partly closed during construction, pedestrian access will be restricted, some trees will be removed in order to build a new car park access and the area will be re-planted. Regrettably, the work will cause inevitable inconvenience to car park users and adjoining properties.



### Site plan showing the four stages of the Lopdell House Precinct development project.

- 1: Carpark extension, now underway
- 2: Lopdell House seismic strengthening and restoration project
- 3: Proposed new art gallery (The Treasure House)
- 4: Lopdell Hall restoration project

Depending on finance, the Lopdell Hall restoration may be brought forward in order to provide a storage and rehearsal space for the Titirangi Theatre Company.

## Discretionary Funding

The board has agreed to fund the following projects from its discretionary funding:

- Manukau Harbour Forum – funding for projects that the Manukau Harbour Forum joint committee may decide to progress (for example a state of the environment report)
- Titirangi Festival of Music – banners and flags to promote this very successful annual festival
- French Bay basic design options – developing options to improve design layout at French Bay, which the community can agree on and support
- Waitākere Domain Hall – contribution to refurbishment including new toilets
- Little Muddy Creek walkway – feasibility study for a walkway connection from the end of Rimutaka Place to Huia Road, including geotechnical investigation, topographical survey, concept drawings and engineer's estimate
- Installation of a half basketball court at Piha
- Contribution to the Piha Domain motor camp garage to enable it to house a fully equipped life support ambulance in Piha when necessary
- Contribution to the upgrade of the road leading up to Hoana Waititi marae
- Titirangi sign – repairs to the Welcome to Titirangi sign erected by the Titirangi Residents' and Ratepayers' Association some 10 years ago
- Glen Eden Business Association – improvements to Glen Eden and production of a newsletter
- Glen Eden Protection Society – advertising for the Glen Eden Heritage Day
- Keep Waitākere Beautiful Trust – funding for schools and community projects, Neat Streets, Volunteer Appreciation Event and Trees for Babies

## Discretionary Community Grants

Three community organisations have received community grants from the board. They are Glen Eden Baptist Church, United North Piha Lifeguard Service, and the Glen Eden Community House.

## Waitākere Primary School travel plans

School travel plans are being developed for Waitākere Primary School to improve safety and accessibility in neighbouring streets in the vicinity of McEntee Road and Anzac Valley Road. Works being considered by Auckland Transport in conjunction with the school include a pedestrian access point and gateway treatment (reddish brown road surfacing and "slow" marking) at McEntee Road, a drop-off/pick-up zone at Anzac Valley Road, safety improvements at the intersection of Bethells Road and Anzac Valley Road, and gateway treatment to encourage slower vehicle speeds along Bethells Road and warn Waitākere Road motorists that a slower speed environment is ahead.



Karekare Beach, Waitākere Ranges



Titirangi Theatre, Lopdell House

## Titirangi Theatre

The Titirangi Theatre has been given a helping hand by the board, which has contributed \$50,000 a year for two years toward relocation costs while the Lopdell House redevelopment progresses. Board Chairperson Denise Yates says the theatre makes a valuable contribution to the Titirangi community and it's important that it keeps functioning during its temporary move from Lopdell House.

The theatre may relocate to the Lopdell Hall (The Treasure House) if sufficient funds are available to bring the project forward from the fourth to second stage of the restoration project.

## Saving the dolphins

The plight of the endangered Maui's and Hector's dolphins has won the support of the Waitākere Ranges Local Board, which has made a submission in support of a Government initiative to extend their area of protection. The little dolphins are the world's smallest and rarest marine mammals and are found only in New Zealand. There is a dwindling population of around 7000 Hector's dolphins in the South Island and about 55 Maui's dolphins in the North Island. Their numbers have dropped dramatically since the introduction of gill and trawl netting with nylon filament nets.



Maui's and Hector's dolphin

## Candia Road safety improvements

Candia Road in Swanson has been identified as the second highest risk road in the Auckland region, and will be subject to a programme of significant work in the coming financial year. A crash reduction study has identified the need for safety remedial work including road/shoulder widening, vegetation trimming, shape correction of intersections, improved road surface, camber, and delineation such as marker posts and edge lines, and a guardrail. It is envisaged the work will be complemented by enforcement and driver education programmes.

## Glen Eden Promotion

A networking meeting for businesses to brainstorm ideas for the promotion of Glen Eden attracted a strong turnout and lots of good ideas for the positive improvement of the gateway town. Hosted by the Waitākere Ranges Local Board and the Glen Eden Business Association, topics for discussion included Park 'n Ride options and ideas for events and activities to promote the Glen Eden village. Those attending also heard what other business associations are doing to increase appeal and foot traffic in smaller town centres. The meetings will be held quarterly.

Board Chairperson Denise Yates says the redevelopment of Glen Eden is a priority for the board. "We want to help the community to continue to grow in a strategic and well managed way, create employment and make the best use of Glen Eden's excellent public transport connections," she says. "Particular attention is needed to ensure that new housing developments are high quality and are resource efficient and this will be a focus for us during the next few years."

## ACE space

Glen Eden now has an ACE space providing information on further education, community education and training – for work or leisure. Run by the Waitākere Learning Shop, the weekly clinics also offer assistance with preparing a curriculum vitae, writing cover letters, searching for jobs and making applications on-line. They are held at Glen Eden's Citizens' Advice Bureau (CAB) in the Glen Eden Library complex from 12.30pm to 3.30pm on Tuesdays. Phone the CAB on 818 8634 for an appointment. "We are very pleased this service is now available in our area," says Board Chairperson Denise Yates.

## Volunteers

Volunteers have notched-up about 800 hours of community service in the Waitākere Ranges Local Board area during the past three months. Among the projects more than 100 people joined the Sustainable Coastlines Trust to help clean up rubbish on Piha Beach and nearby coastal areas, picking up 500 litres of rubbish comprising cigarette butts, food wrappers and bottle caps and lids.

A "green day out" organised by Ecomatters Environmental Trust, Sustaining Our Streams and Keep Waitākere Beautiful Trust took place on Rahui Kahika reserve in Titirangi. The event turned the spotlight on the reserve and the fascinating bush and stream life that lives there in the head waters of the Avondale Stream. Around 100 volunteers took part in a weeding bee of the reserve's wetland, removing weeds which filled four super-sized weed bags. The Church of Jesus Christ of Latter Day Saints assisted, along with Local and Sports Parks West contractors which removed the rubbish from both clean-ups.



Trees for Babies planting day at Maywood Reserve, Glen Eden.

## Gambling Machines

The board has reaffirmed the former Waitākere City Council's sinking lid policy on gambling machines, whereby the number of machines and venues is capped and expected to decrease over time. It has expressed support for a new international convention centre for Auckland, but not for any deal that results in an increase in gaming machines, including an increase in the number of machines in any venue. The board also wants stronger measures around harm minimisation including the appointment of harm minimisation officers, pre-paid gambling cards, on-screen harm minimisation messages, and a system that prevents medium to large prizes from being reinvested into machines. It has asked the governing body to lobby for a higher percentage of casino gambling profits to be returned to community funding and for support for community organisations that could experience loss of income as a result of the sinking lid policy.



## Landing Road Walkway

A long awaited walkway linking Grendon and Landing Roads in Titirangi has been given the green light by the board, which has agreed to make up a funding shortfall to enable the project to be completed in the 2012/13 financial year.

## Piha Domain Basketball Half Court

A new basketball half court will be located within Piha Domain a few metres north of the existing playground within the large open grassed area. The board accepted a staff recommendation regarding this location, which was supported by most people who submitted to the proposal. It has allocated \$30,000 for the half court, which is considered an important addition to Piha's youth facilities.

## Local Area Plan – Bethells/TeHenga/Waitākere Valley

Initiation of the Bethells/Te Henga/Waitākere Valley Local Area Plan (LAP) has been delayed to allow tangata whenua Te Kawerau a Maki to be part of the planning process. Initial consultation has indicated strong support for a LAP with most concerns able to be addressed through appropriate and carefully managed community engagement. Local Area Plans are part of the Waitākere Ranges Heritage Area programme. They outline objectives and actions to maintain the distinctive and valued qualities of areas over time.



The next public meeting of the Waitākere Ranges Local Board will be held at 6.30pm in the board's offices at 39 Glenmall Place, Glen Eden on Wednesday July 25.

### For more information:

-  09 813 9150
-  WaitakereRangeslocalboard@aucklandcouncil.govt.nz
-  [www.aucklandcouncil.govt.nz/WaitakereRanges](http://www.aucklandcouncil.govt.nz/WaitakereRanges)
-  [www.facebook.com/WaitakereRanges](http://www.facebook.com/WaitakereRanges)